



BAYRAMOĞLU-GROUP

BEYOND BUSINESS

CONTENT

ABOUT BAYRAMOĞLU-GROUP.....	2
FOOD & BEVERAGE	5
CHEMICALS	32
POLYMERS	41
DETERGENTS	66
MINERALS	75
PACKAGINGS	83
CONTACT US	89
BOARDS	90

ABOUT BAYRAMOĞLU-GROUP

At BAYRAMOGLU GROUP, we take pride in being a trusted exporter and supplier of premium-quality products. With over 20 years of experience in the export business, operating in both Iran and Turkey, we have developed a deep understanding of the market and the specific needs of our clients. Our extensive expertise allows us to offer a wide range of customized products tailored to meet the evolving requirements of our clients across the CIS region and international markets. As our slogan "Beyond Business" emphasizes, we are not just a supplier; we are a reliable partner committed to your long-term success. We aim to build enduring relationships by consistently delivering dependable products and outstanding service, helping your business grow and prosper.



RUSSIA

KAZAKHSTAN

MONGOLIA

CHINA

TURKEY

PACIFIC
OCEAN

FOOD & BEVERAGE RAW MATERIALS

BAYRAMOGLU GROUP IS A WELL-ESTABLISHED SUPPLIER WITH OVER 20 YEARS OF
EXPIENCE IN THE FOOD INDUSTRY. WE SPECIALIZE IN PREMIUM FOOD PRODUCTS,
ENSURING THAT OUR CUSTOMERS RECEIVE HIGH-QUALITY ITEMS THAT MEET THEIR DAILY NEEDS.

AVAILABLE RAW MATERIALS

DAIRY

FRUIT CONCENTRATE&PUREE

SWEETENERS





DAIRY RAW MATERIALS

UNSALTED SWEET BUTTER

- Fat Percentage: min 82%
- " Pasteurized "
- Natural Color & Yellow
- Custom-Branded **25kg Carton Packaging** – Ensuring Premium Quality and Distinctive Presentation!

"Indulge in the rich, creamy taste of our Unsalted Sweet Butter. Ideal for baking, cooking, or spreading, it adds a smooth, natural flavor to every dish."



SKIM MILK POWDER

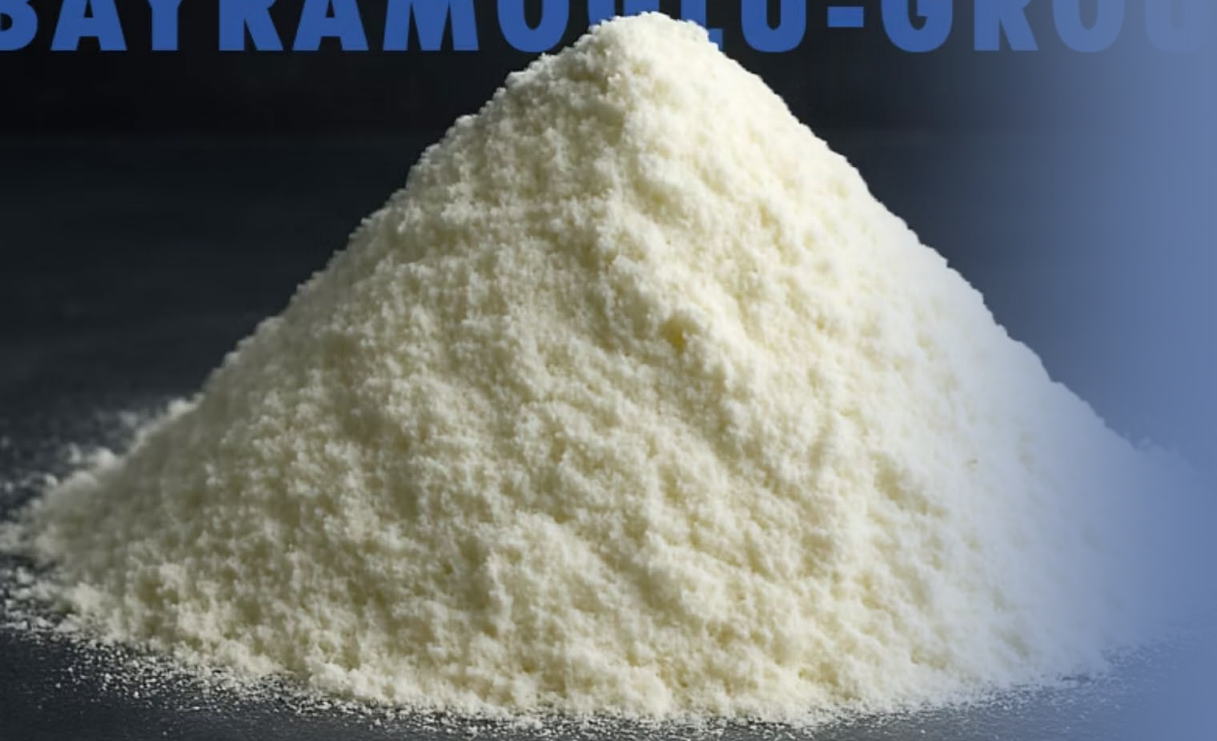
Skim milk powder is a high-quality dairy product made from milk with the fat removed. It contains **45-50% LACTOSE** and at least **33% PROTEIN** or more.

- Fat less than 1
- Scorched particle: DISK A
- Color , flavor , texture normal and favorite

"Premium Skim Milk Powder – A nutritious and versatile ingredient, perfect for adding creamy texture and rich flavor to your beverages, baked goods, desserts, and more. Low in fat yet high in essential nutrients, it's the ideal choice for a healthy, delicious boost in your culinary creations."


Packaging: Bag Type

BAYRAMOGLU-GROU





SWEETENERS



POWDERED GLUCOSE

- Perfect for bakery, gum, and fruit juice – our powdered glucose delivers quality you can taste.
- Shipped securely in **high-quality bags**, our export-grade product ensures safety and freshness every time.
- Primary Application: Food Manufacturing & Processing.

"Our powdered glucose is perfect for bakery products, chewing gum, and fruit juices, offering consistent quality and optimal performance."

EDIBLE GLUCOSE SYRUP

- Main Application: **Food Industrial**
- Our Products Are Delivered in **High-Quality Drums**, Ensuring Safety and Freshness!

"Pure Edible Liquid Glucose – A versatile, high-quality ingredient that enhances the sweetness, texture, and stability of your baked goods, candies, beverages, and more. Perfect for achieving smooth consistency and preventing crystallization in your food creations."





FRUCTOSE

- NFCS : 10,20,30,42 and 55
- Primary Application: Food Manufacturing & Processing
- **Powder** is packaged in **BAGS**, while **liquid** is packaged in **DRUMS** for secure transport and storage.

We offer high-quality fructose in both powder and liquid forms, ensuring superior quality and consistency for various applications in the food industry.

MALTODEXTRIN

- High and low DE
- Main application: Food industrial
- Our maltodextrin comes in secure, easy-to-handle **export bags**.

"Our maltodextrin is available in export packaging, securely sealed in convenient, high-quality bags for easy handling and transportation."





CORN STARCH

- Modified.
- Industrial and edible usage.
- Packed in Bags.

"High-Quality Corn Starch – A versatile, essential ingredient for thickening sauces, soups, and puddings, or enhancing the texture of baked goods. With its smooth consistency and neutral flavor, it's perfect for a wide range of culinary applications, both sweet and savory."

FRUIT CONCENTRATE & PUREE





APPLE JUICE CONCENTRATE

Product Type	Natural Juice Concentrate
BRIX LEVEL	70 ± 1
PH	3.5 - 4.0
ACIDITY	1.4 - 0.2
COLOR	Min 50
CLARITY	Min 96
NTU	Max 5.0
PACKAGING	Weight 260kg drums

APPLE PUREE

Product Type	Natural Juice Concentrate
BRIX LEVEL	36 - 38 %
PH	4.0 ± 0.1
ACIDITY	0.6 ± 0.1
COLOR	More than 50
STARCH	Negative
T.P.C	Negative
YEAST	Negative
PACKAGING	Weight 230kg drums





PEACH PUREE

Product Type	Natural Juice Concentrate
BRIX LEVEL	27 - 29
PH	4.0 - 4.2
ACIDITY	0.9 - 1.2
PACKAGING	Weight 230kg drums

POMEGRANATE JUICE CONCENTRATE

Product Type	Natural Juice Concentrate
Brix Level	65 ± 1
PH	2.9 - 3.5
ACIDITY	5 - 8
COLOR	0.7 - 0.9
PACKAGING	Weight 260kg drums





ORANGE JUICE CONCENTRATE

Product Type	Natural Juice Concentrate
Brix Level	63 ± 1
PH	3 - 4
ACIDITY	4.5 - 6.0
PACKAGING	Weight 260kg drums

SOUR CHERRY JUICE CONCENTRATE

Product Type	Natural Juice Concentrate
BRIX LEVEL	65 ± 1
PH	3 - 4
ACIDITY	5.5 - 8
COLOR	1.5 - 1.8
NTU	Max 5.0
PACKAGING	Weight 260kg drums





PEACH JUICE CONCENTRATE

Product Type	Natural Juice Concentrate
BRIX LEVEL	27 - 29
PH	4.0 - 4.2
ACIDITY	0.9 - 1.2
PACKAGING	Weight 260kg drums

DATE CONCENTRATE

(DE COLORED)

Product Type	Natural Concentrate
BRIX LEVEL	70 ± 1
PH	3.5 - 5.4
ACIDITY	0.3 - 0.6
CLARITY	Min 80
COLOR	Min 48
PACKAGING	Weight 260kg drums





DATE CONCENTRATE

Product Type	Natural Concentrate
BRIX LEVEL	70 ± 1
PH	3.5 - 5.4
ACIDITY	0.3 - 0.6
CLARITY	Min 50
COLOR	4.5 - 12
PACKAGING	Weight 260kg Drums

RED GRAPE CONCENTRATE

Product Type	Natural Juice Concentrate
BRIX LEVEL	65 ± 1
PH	3.3 - 4.5
ACIDITY	0.7 - 2.6
COLOR	1.1 - 1.3
NTU	Max 5.0
PACKAGING	Weight 260kg drums





WHITE GRAPE CONCENTRATE


Product Type	Natural Juice Concentrate
BRIX LEVEL	65 ± 1
PH	3 - 4.5
ACIDITY	0.7 - 1.3
COLOR	Min 50
CLARITY	Min 85
NTU	Max 5.0
PACKAGING	Weight 260kg drums

TOMATO PASTE

- Customizable Brix Levels to Meet Your Specific Needs!
- Secure and Reliable [Drum Packaging](#) for Safe Transport and Storage!

"Freshly Sourced, Premium Quality Tomato Paste – Preserving the Natural Richness and Flavor of Ripe Tomatoes."





PROTEIN RAW MATERIALS



FROZEN CHICKEN (MDM)

Our Frozen Chicken Paste is a high-quality, food-grade product produced under strict hygiene and safety standards. It is made from carefully selected chicken meat, processed to achieve a consistent texture and natural light pink color. This product is ideal for use in sausages, nuggets, burgers, and other processed meat applications.

Packaging type: **Palletized corrugated carton boxes.** Maintained at **-20.0°C**, the paste retains its freshness and nutritional value. Custom fat and protein ratios are available upon client request to meet specific production needs.

PETROCHEMICAL RAW MATERIALS

INCLUDE:

CHEMICALS

POLYMERS

DETERGENTS

Petrochemical Solutions
Οργανικά Αποβλήτα

CHEMICAL RAW MATERIALS

PETROCHEMICALS

ETHYLENE GLYCOLS



MEG

BAYRAMOGLU-GROUP offers high-quality **Monoethylene Glycol (MEG)**, a versatile chemical compound used in a wide range of industrial applications. MEG is primarily used in the production of polyester fibers, resins, and antifreeze formulations. It also plays a vital role in the manufacturing of coolants, hydraulic fluids, and in the production of plastics. With its exceptional purity and reliability, BAYRAMOGLU- GROUP's MEG ensures superior performance in all applications, making it a trusted choice for various industries.

PACKAGING: in high quality Drums.



DEG

BAYRAMOGLU-GROUP offers premium **Diethylene Glycol (DEG)**, a versatile chemical used in a variety of industrial applications. DEG is commonly utilized in the production of plastics, antifreeze formulations, and as a solvent in various chemical processes. It is also used in the manufacture of hydraulic fluids, cosmetics, and in the production of resins and coatings. Known for its high purity and dependable quality, BAYRAMOGLU-GROUP's DEG ensures reliable performance across multiple industries.

PACKAGING: available in standard and secure Drums



TEG

BAYRAMOGLU-GROUP provides high-quality **Triethylene Glycol (TEG)**, a vital chemical used across various industrial sectors. TEG is commonly used in the production of plastics, as a solvent in coatings, and in the natural gas industry for dehydration processes. It is also used in the formulation of hydraulic fluids, antifreeze solutions, and as a stabilizer in various chemical processes. Known for its high purity and reliability, BAYRAMOGLU-GROUP's TEG ensures optimal performance in all its applications.

PACKAGING: in standard and safe Drums.





BASIC CHEMICALS

XYLENE



Xylene is a clear, colorless, and highly flammable liquid known for its sweet scent and strong solvency. BAYRAMOĞLU-GROUP supplies high-quality xylene suitable for industries such as **paints, coatings, adhesives, and cleaning agents**. It consists of three isomers—ortho, meta, and para-xylene—offering versatility in industrial use. Xylene is also a key raw material for polyester fibers, resins, plasticizers, dyes, and synthetic rubber. BAYRAMOĞLU-GROUP guarantees consistent quality and compliance with international standards, ensuring reliable performance in every application.

PACKAGING: metal drums for safe handling and transport.

CAUSTIC SODA

A highly versatile and strong alkali, Caustic Soda is essential in the production of soaps, detergents, paper, textiles, and for water treatment processes. BAYRAMOĞLU-GROUP supplies Caustic Soda with 80% purity to ensure reliable performance across industrial applications.

PACKAGING: Available in 25 kg bags for convenient handling, storage, and transportation.



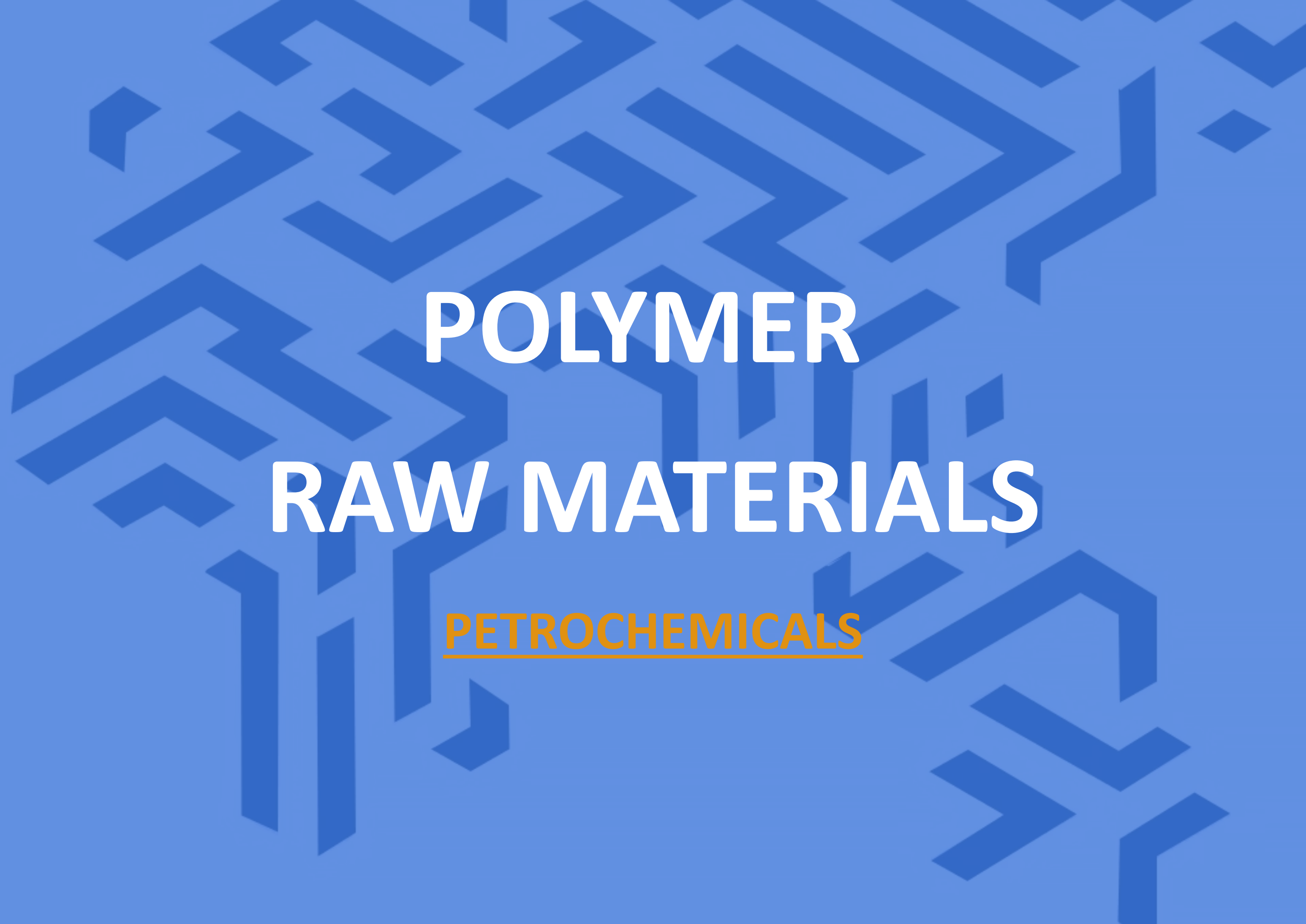
ACID ACETIC

Acetic acid is a clear, colorless liquid with a sharp vinegar-like odor, used as a versatile solvent and chemical intermediate in many industries.

BAYRAMOĞLU-GROUP supplies high-purity acetic acid ideal for producing synthetic fibers, plastics, paints, pharmaceuticals, food additives, and cleaning agents. With its strong acidity and excellent solvency, it's essential in esterification, polymer manufacturing, and pH control. Our acetic acid complies with international standards and ensures consistent quality, purity, and performance for industrial users.

PACKAGING: metal drums for safe handling and transport.



The background of the slide is a solid blue color with a complex, repeating geometric pattern. The pattern consists of various shades of blue, creating a 3D effect of interlocking, angular shapes that resemble a stylized molecular structure or a crystalline lattice. The pattern is dense and covers the entire background.

POLYMER RAW MATERIALS

PETROCHEMICALS

MISSION

To be a leading exporter and supplier of high quality polymer products, leveraging our strong relationships with the largest manufacturers in Iran to provide the best prices and exceptional service to our clients in the CIS countries.

VISION

To become the preferred partner for polymer products in the CIS region recognized for our commitment to quality, competitive pricing, and reliable supply chain solutions.



STRATEGIC GOALS

Strengthen Partnerships: Enhance relationships with manufacturers in Iran and Turkey to ensure consistent quality and pricing.

Market Expansion: Increase market share in the CIS countries by expanding our customer base and exploring new market opportunities.

Sustainability: Incorporate sustainable practices in our sourcing and supply chain to contribute to environmental responsibility.

Customer Satisfaction: Achieve high levels of customer satisfaction through timely delivery, competitive pricing, and responsive service.

Innovation: Continuously seek innovative solutions and products to meet the evolving needs of our clients.

HIGH DENSITY POLYETHYLEN (HDPE)

Unique specifications of HDPE in comparison with other plants:

Variable products regarding
the variety of produced
grades



High production capacity

Feasibility to produce
colorful grades and
possessing two extruder
and packaging lines



The background of the image is a solid blue color. Overlaid on this is a large, dense pile of white, spherical pellets, which are high-density polyethylene (HDPE) granules. The pellets are piled in a way that creates a sense of depth, with some pellets in the foreground being in sharp focus and others in the background being blurred. The text 'HDPE DATA SHEET' is centered over the middle of the image.

HDPE DATA SHEET

HF4760 (BL3)

HF4760 (BL3) is the premium raw material for creating high-quality plastic bottles with exceptional clarity, durability, and flexibility. Designed to deliver outstanding performance, it sets the standard for excellence in the packaging industry, ensuring superior results every time.



Resin Properties	Unit	Typical value	Test Method
Melt Index(21.6)	g/10min	23	ISO 1133
Melt Index(5)	g/10min	1.2	ISO 1133
FRR(21.6/5)	-	19	-
Density	g/cm ³	0.954	ISO 1183
MOLDED PROPERTIES	UNIT	TYPICAL VALUE	TEST METHOD
Notched Impact	mJ/mm ²	9	ISO 179/ 1 eA



APPLICATIONS

Density: 0.952-0.956 g/cm

For containers with capacities ranging from a few ml up to 10 liters, also for production of sheets for thermoforming.

HMCRP100N (PE100)

HMCRP100N (PE100) is a high-density polyethylene grade specially designed for pressure pipe applications requiring excellent long-term strength, exceptional resistance to slow crack growth, and superior performance in demanding environments.



Natural PE100 pipe resin.

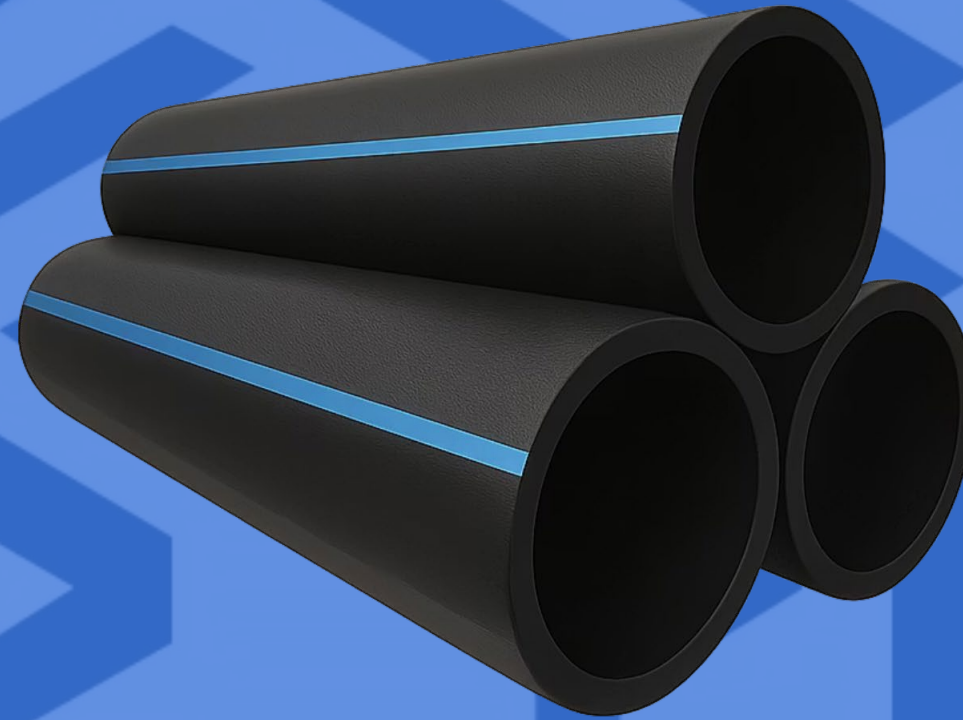


MFR: 190/5:0.19-0.25



Antioxidant/process stabilizer

Test/Composition	Unit	Typical Value	Test Method
Density	g/cm ³	0.948	ISO 1183
FRR 21.6/5		28	
Hydrostatic Strength (80°C)	h	5000 (4.5N/mm ²)	ISO 1167
MFR 190°/21.6	g/10min	6.2	ISO 1133
MFR190°/5	g/10min	0.22	ISO 1133
Notched Impact(23°C)	mJ/mm ²	24	ISO 179/1eA



APPLICATIONS:

Density: 0.946-0.950 g/cm³

Pipes for gas and water transportation at higher pressures or with thinner walls compared to PE80 (UV stabilization and/ or pigments during processing)

PE100 BLACK

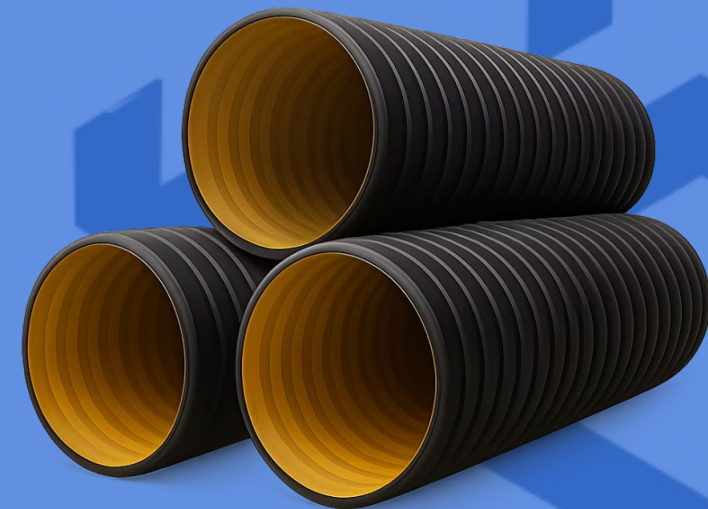
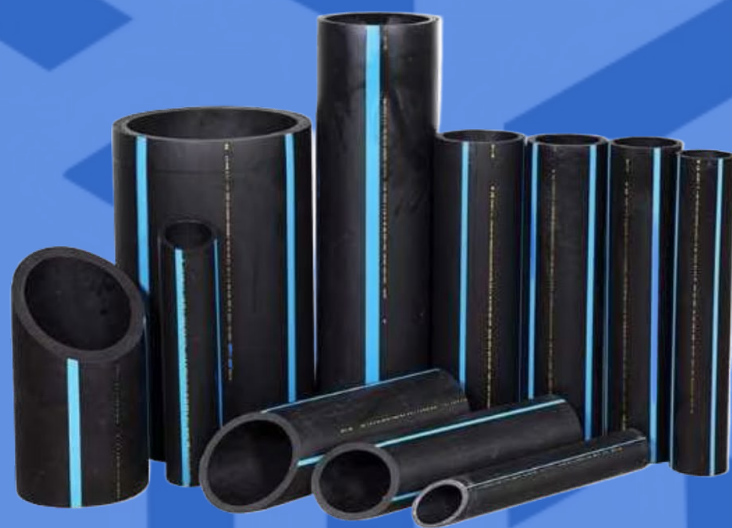
Resin Properties	Unit	Value	Test Method
Melt Index (5)	g/10min	0.22	ISO 1133
Melt Index (21.6)	g/10min	6.2	-
FRR (21.6/5)	g/10min	28	-
Density	g/cm ³	0.957	ISO 1183
Mechanical Properties			
stress at Yield	MPa	>23	ISO 527
Charpy Notched Import at 23°C	kJ/m ²	>23	ISO 179
Strain Hardening Modulus At 80°C	MPa	>35	ISO 18488
FNCT4MPa,2% Arkopal N100,80°C	hr	>1000	ISO 18553
ESCR (F50, 10% gepal)	hr	>5000	ASTM D1693
Pigmentation			
Carbon Black Dispersion	grade	>3	ISO 18553
Carbon Black Content	2.0-2.5	%	ISO 6964

APPLICATIONS:

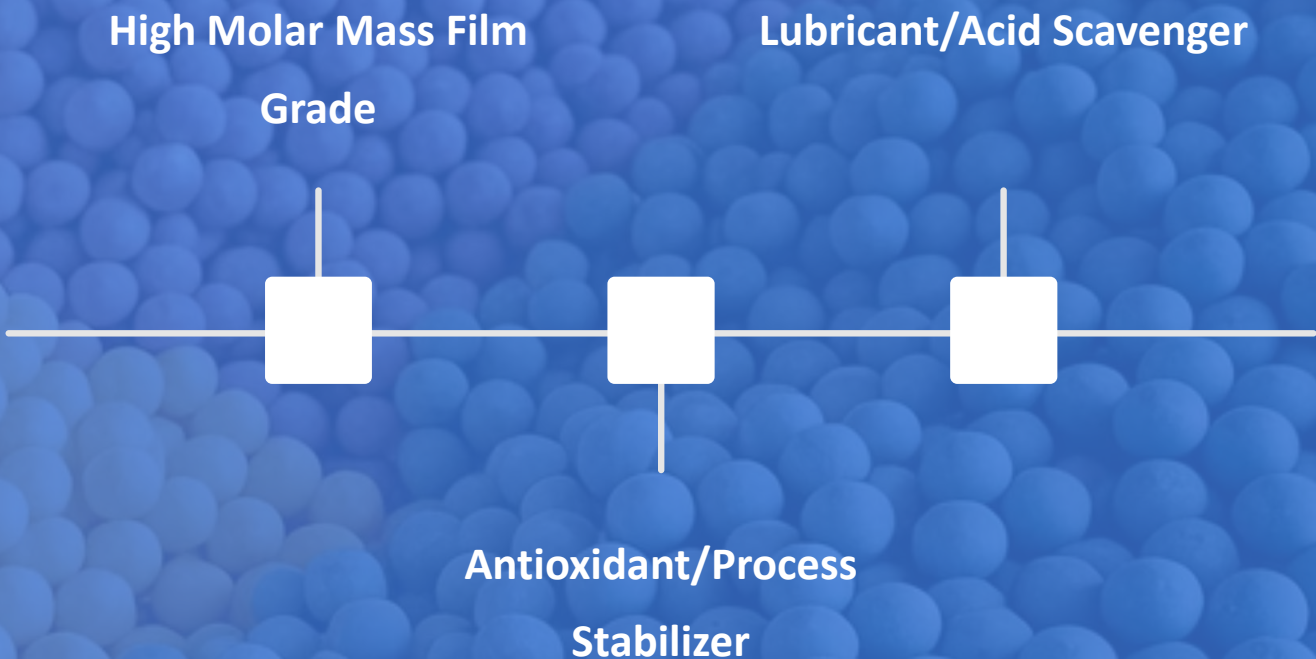
Density: 0.955-0.959 g/cm³

Main Applications:

Top quality PE100 pressure pipes for gas and water transportation at higher pressures or with thinner walls than PE80



HM9450F (EX5)



The HM9450F (EX5) is a durable, high-strength polymer offering excellent chemical resistance and performance for various industrial applications.

Test/Composition	Unit	Typical Value	ASTM Method
Density	g/cm ³	0.949	ISO 1183
Fish Eye Note	note	<3	Internal
FRR 21.6/5	h	29	-
MFR 190°/21.6	g/10min	8.0	ISO 1133
MFR 190°/5	g/10min	0.28	ISO 1133

APPLICATIONS:

For blown films with paperlike quality, suitable for counter bags, carrier bags and wrapping films

Excellent processing



HD60507 / HD60507UV

Medium Density Film Grade with UV Stabilizer (UV version)

Resin Properties	Unit	Typical Value	Test Method
Density	g/cm ³	0.958	D 1505
Melt Index (190°C/2.16Kg)	g/10min	0.958	D 1238
Mechanical Properties			
Vicat Softening Point	°C	128	D 1525
Molded Properties			
Flexural Modulus	MPa	1450	D790
Notched Izod Impact @ 23 °C	J/m	30	D256/A

APPLICATIONS:

Injection molding grade

Cates, Pails, Baskets



HD5000S

HD5000S is a versatile HDPE grade offering excellent physical properties, processability, and chemical resistance for various industrial applications.

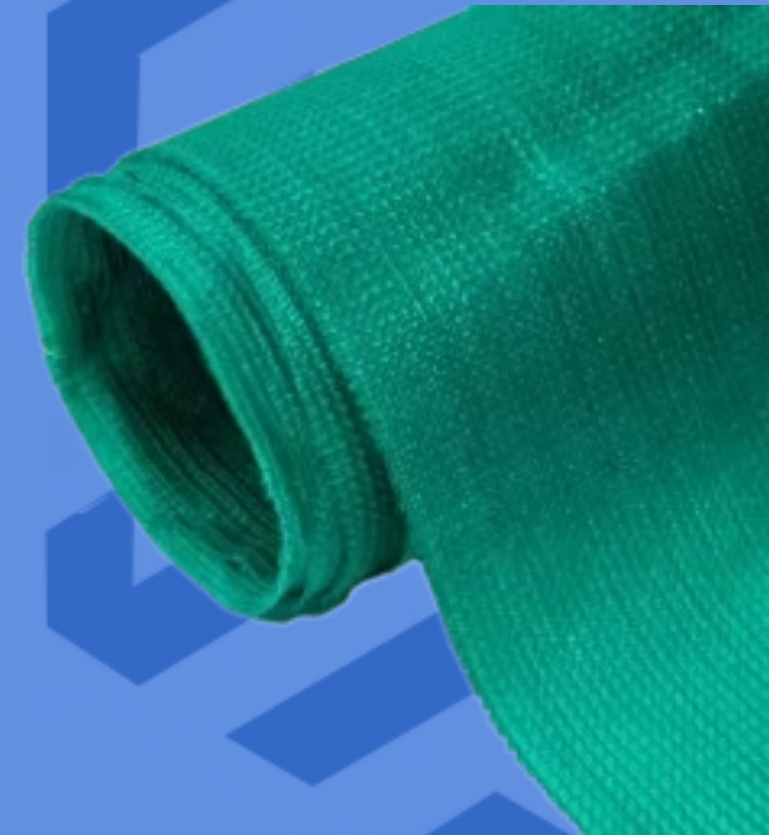
Property	Value	Unit	Test Method
Density	0.923	g/cm ³	D1505
Melt Index (190°C/2.16kg)	0.8	g/10min	D1238
Thermal Properties			
Vicat Softening Point	C	130	D1525
Molded Properties			
Flectural Modulus	MPa	1100	D790
Tensile Strength at Yield	MPa	28	D790
Tensile Strength at Break	MPa	14	D638
H.D.T	°C	77	D648
Notched Izod Impact @ 23 °C	J/m	230	D256/A

APPLICATIONS:

Fishing net, Rope

Agricultural net, Tarpaulin

Woven sacks



HD52505 / HD52505UV

High-Density Polyethylene Product

HD52505/HD52505UV is a specialized HDPE grade providing excellent physical properties, UV resistance (UV version), and durability for demanding applications.

Resin Properties	Typical Value	Unit	Test Method
Density	0.952	g/cm ³	D1505
Melt Index (190°C/2.16kg)	5	g/10min	D1238
Thermal Properties			
Vicat Softening Point	124	°C	D1525
Molded Properties			
Flexural Modulus	1200	MPa	D790
Tensile Strength at Yield	27	MPa	D638
Tensile Strength at Break	13	MPa	D638
H.D.T	76	°C	D648
Notched Izod Impact @ 23°C	29	J/m	D256/A

APPLICATIONS:

Caps and closures for mineral water bottles, Caps for sparking water and carbonated soft drink,
Pallets.



HD52518

High-Density Polyethylene Product

HD52518 is a specialized HDPE grade providing excellent physical properties and processability for a variety of applications requiring high stiffness and durability.

Resin Properties	Typical Value	Unit	Test Method
Density	0.952	g/cm ³	D1505
Melt Index (190°C/2.16kg)	18	g/10min	D1238
Thermal Properties			
Vicat Softening Point	121	°C	D1525
Molded Properties			
Flexural Modulus	1200	MPa	D790
Notched Izod Impact @ 23°C	19	J/m	D256/A

APPLICATIONS

Housewares

Toys, Flower pots

Injection moulding grade



LLDPE OVERVIEW

Variable products
regarding the variety
of produced grades

Feasibility to produce
colorful grades and
possessing two
extruder
and packaging lines

High production
capacity

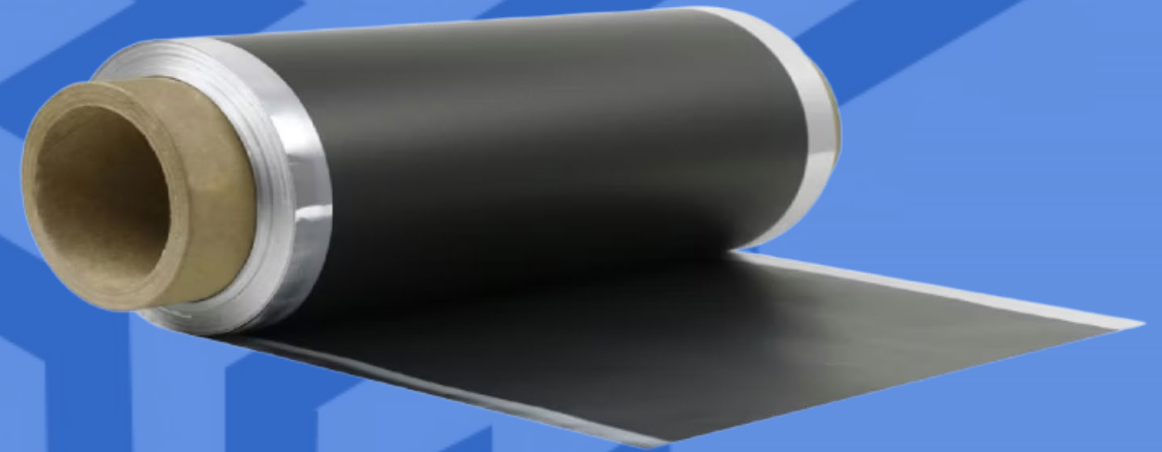
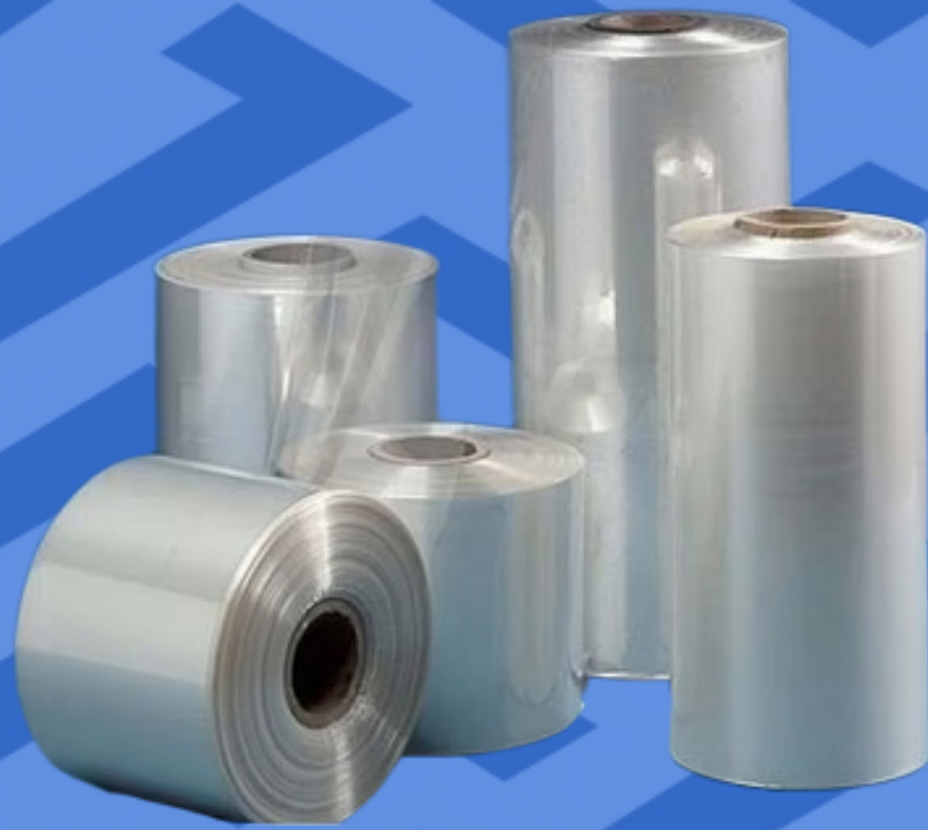


A conceptual image for a pharmaceutical datasheet. It features a hand holding several small, round, blue pills. The hand is positioned over a large, dense pile of the same blue pills that covers the entire surface. In the upper left corner, a glass test tube is visible, tilted as if it has just poured the pills. The entire image is overlaid with a semi-transparent blue filter. The text 'LLDPE DATASHEET' is centered in a bold, orange, sans-serif font.

LLDPE DATASHEET

LL235F6

Resin Properties	Unit	Typical Value	Test Method
Melt Index (190°C/21.6Kg)	g/10min	0.6	ISO 1238
Density	g/cm ³	0.923	ISO 1505
Mechanical Properties			
Tensile Strength at Yield	MPa	11/11 (MD/TD)	D882
Tensile Strength at Break	MPa	54/44 (MD/TD)	D882
Tensile Elongation at Break	%	650/840 (MD/TD)	D882
Dart Impact	g	88	D1709
Recommended Processing			
Melt Temperature	°C	190-230	
Blow up ratio		1.8-3.0	
Die Gap	mm	2-2.5	
Thickness	micron	18-180	



APPLICATIONS

Agricultural films and tapes

Lamination

Shrink film

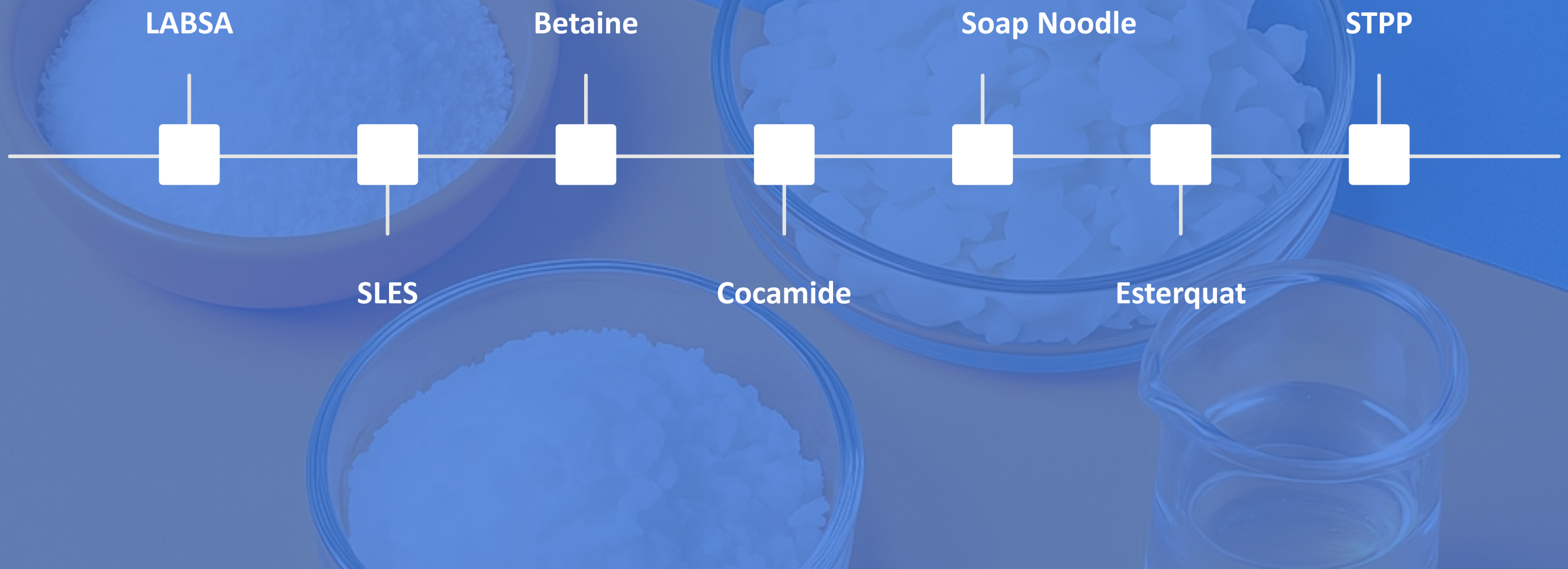
Industrial films, frozen food packaging

The background of the slide is a solid blue color with a complex, repeating geometric pattern. The pattern consists of various shades of blue lines and shapes that form a series of interlocking, angular, and somewhat crystalline structures, resembling a stylized molecular or architectural design.

DETERGENT RAW MATERIALS

PETROCHEMICALS

Bayramoglu Group is a well-established supplier with over 20 years of experience in the detergent industry. We specialize in premium raw materials for detergent products, ensuring that our customers receive high quality items that meet their daily needs. Our extensive range includes:



A laboratory beaker filled with a dark brown liquid sits on a dark surface. In the background, two large blue industrial drums are visible, slightly out of focus. The entire scene is set against a solid blue background.

LABSA

Linear Alkyl Benzene Sulphonic Acid a key anionic surfactant widely used in detergent formulations. Known for its excellent cleaning efficiency and biodegradability, LABSA is an essential raw material for household and industrial cleaners. Sourced and supplied by BAYRAMOĞLU-GROUP, ensuring consistent quality for global manufacturers.

PACKAGING:

Supplied in **220 kg net drums** for safe and efficient transport.

SLES 70%

(TEXAPON)

Sodium Lauryl Ether Sulfate 70% a widely used anionic surfactant known for its excellent foaming and cleansing properties. SLES is a key ingredient in personal care products like shampoos, body washes, and toothpaste, as well as in household and industrial cleaners. BAYRAMOĞLU-GROUP delivers high-quality SLES tailored to global standards.

PACKAGING:

Available **in 166 kg net drums**, ideal for safe and efficient transport and storage.





BETAINE

A gentle amphoteric surfactant commonly used in personal care products such as shampoos, body washes, and facial cleansers. It enhances foam, reduces irritation, and improves formulation stability. BAYRAMOĞLU-GROUP supplies high-quality Betaine for cosmetic and household applications.

PACKAGING:

Supplied **in 220 kg net drums**, ensuring product stability and easy bulk usage.

COCAMIDE

A non-ionic surfactant and foam booster derived from coconut oil, Cocamide is widely **used in shampoos, liquid soaps, and other personal care** products to improve viscosity, foam stability, and cleansing performance.

BAYRAMOĞLU-GROUP offers high-purity Cocamide for consistent formulation quality.

PACKAGING:

Delivered **in 200 kg net drums**, suitable for bulk handling and secure storage.





SOAP NOODLE

Produced from **80% palm-based oils** and **20% coconut-based oils**, our soap noodles are ideal for high-quality bar soap manufacturing. This blend offers excellent cleansing properties, good foaming, and skin-friendly performance, making it suitable for both cosmetic and household soap applications.

BAYRAMOĞLU-GROUP delivers consistent, plant-based soap noodles tailored to your production needs.

PACKAGING:

Packed in durable **polypropylene bags**, ideal for safe storage and easy handling.

ESTERQUAT

A biodegradable cationic surfactant widely used in fabric softeners and hair conditioners, Esterquat offers excellent softening, antistatic, and conditioning properties. BAYRAMOĞLU-GROUP delivers high-quality Esterquat for stable, eco-friendly formulations **in personal and home care products**.

PACKAGING:

Supplied in high-quality **plastic drums** for safe handling, storage, and industrial use.






STPP

Sodium Tripolyphosphate A multifunctional inorganic compound, STPP is widely used in detergent formulations as a water softener, dispersing agent, and cleaning enhancer.

BAYRAMOĞLU-GROUP supplies high-purity STPP for efficient and consistent performance in household and industrial cleaning products.

PACKAGING:

Available in durable **25 kg bags**, designed for safe storage, handling, and transport in industrial environments.



MINERAL RAW MATERIALS

Bayramoglu Group is a well-established supplier with over 20 years of experience in the MINERAL RAW MATERIALS industry. We specialize in premium materials for packaging products, ensuring that our customers receive high quality items that me their daily needs. our extensive range include:

Solid Sodium Silicate

Sodium Sulphate

Calcium Carbonate

Colored Granules

Sodium Carbonate

SOLID SODIUM SILICATE

An essential alkali silicate used in detergents, adhesives, and construction materials, Solid Sodium Silicate offers excellent binding, buffering, and emulsifying properties. **It is water-soluble with a typical ratio of 2.** BAYRAMOĞLU-GROUP supplies high-purity solid sodium silicate to ensure consistent performance across industrial applications.

PACKAGING:

Supplied in **jumbo bags** for efficient bulk handling, storage, and transportation in industrial environments.





COLORED GRANULES

Designed for various industrial applications, Colored Seed is a salt- and bentonite-based mineral available in a range of vibrant colors including purple, pink, blue, yellow, and green. Its unique composition enhances the quality and functionality of various formulations. BAYRAMOĞLU-GROUP offers Colored Seed in multiple shades to suit different industrial needs and applications.

PACKAGING:


Available in **25 kg bags**, designed for safe handling, storage, and integration into powder detergent production lines.

SODIUM SULPHATE

BAYRAMOGLU-GROUP delivers high-quality Sodium Sulphate, a key compound used across multiple industries. Our Sodium Sulphate is carefully processed to ensure superior purity and consistency, making it ideal for **use in detergents, glass manufacturing, textile industry, and in the production of paper pulp**. Additionally, it is used in water treatment and as a filler in certain chemical processes. With a commitment to excellence and reliability,

BAYRAMOGLU-GROUP provides Sodium Sulphate that meets the highest industry standards, ensuring optimal performance in all applications.





SODIUM CARBONATE

BAYRAMOGLU-GROUP is proud to offer high-quality Sodium Carbonate, a versatile compound essential for a variety of industrial applications. Our Sodium Carbonate is sourced from premium raw materials, ensuring consistency and purity for use in glass production, detergents, water treatment, soap manufacturing, and as a pH regulator in different processes. With a focus on reliability and superior performance, BAYRAMOGLU-GROUP is your trusted partner for Sodium Carbonate solutions.

CALCIUM CARBONATE

BAYRAMOGLU-GROUP specializes in the production and supply of high-quality Calcium Carbonate. Our premium-grade Calcium Carbonate is derived from natural, pure limestone, offering exceptional consistency and reliability for a wide range of industrial applications. It is commonly used in industries such as plastics, paints, coatings, rubber, paper, and pharmaceuticals. Our product ensures optimal performance in each of these applications, providing excellent durability and effectiveness. Trust BAYRAMOGLU-GROUP for your Calcium Carbonate needs, where quality meets excellence.





BARITE POWDER (DRILLING GRADE)

BAYRAMOĞLU GROUP supplies high-quality **Barite Powder** (BaSO_4) used as a weighting agent in drilling fluids for the oil and gas industry. Our Barite is available in various grades to meet customer requirements, ensuring consistent density and purity. It is chemically inert, stable under high pressure, and suitable for demanding drilling applications. Packaging: **Supplied in jumbo bags (1–1.5 MT)** for safe export and bulk handling.



PACKAGING PRODUCTS

Bayramoglu Group is a well-established supplier with over 20 years of experience in the packaging industry. We specialize in premium materials for packaging products, ensuring that our customers receive high quality items that me their daily needs. our extensive range include:

LABEL

SHRINK FILM

FILM STRETCH

FOOD GRADE

LABEL

We offer a wide range of high-quality self-adhesive labels, including:

- Pearlized (satin) self-adhesive labels
- Standard labels
- Metalized self-adhesive labels
- Transparent self-adhesive labels
- Paper and acrylic adhesive labels
- Finger-lift self-adhesive labels

Our labels are designed for various industrials, commercial, and packaging applications, ensuring excellent performance and durability.



SHRINK FILM

Shrink film is a versatile and economical packaging material used in various industries such as food, cosmetics, pharmaceuticals, and industrial goods. It provides a clear and professional look while protecting products from dust, moisture, and tampering. When heat is applied, the film shrinks tightly around items of any shape or size. This creates a secure and durable seal that enhances both product safety and shelf appeal. Shrink film is widely used for packaging boxes, bottles, food products, and toys. It offers an efficient and reliable solution for modern packaging needs.

Key Advantages:

- Crystal-clear surface for excellent product visibility
- Strong and stable wrapping with reliable protection
- Space-saving and lightweight
- Budget-friendly and efficient
- Enhances product presentation
- Flexible packaging for various shapes and sizes



BAYRAMOĞLU GROUP

FILM STRETCH

Stretch film is a high-performance packaging solution designed to secure, stabilize, and protect products during transportation and storage. Widely used across multiple industries—including paper rolls, sanitary products, industrial panels, construction equipment, food and beverage, pharmaceuticals, auto parts, and agricultural goods—stretch film provides reliable containment and product integrity on both wooden and plastic pallets.

Available in various types such as UV-resistant, perforated, anti-static, and colored films, our stretch film meets the unique requirements of diverse applications. Its outstanding elasticity, high tensile strength, and excellent cling properties ensure superior load retention while optimizing material usage.

Key Advantages:

- Exceptional strength and durability
- High efficiency and cost-effectiveness
- Superior cling and load stability
- Easy handling and application
- Excellent stretchability for maximum coverage



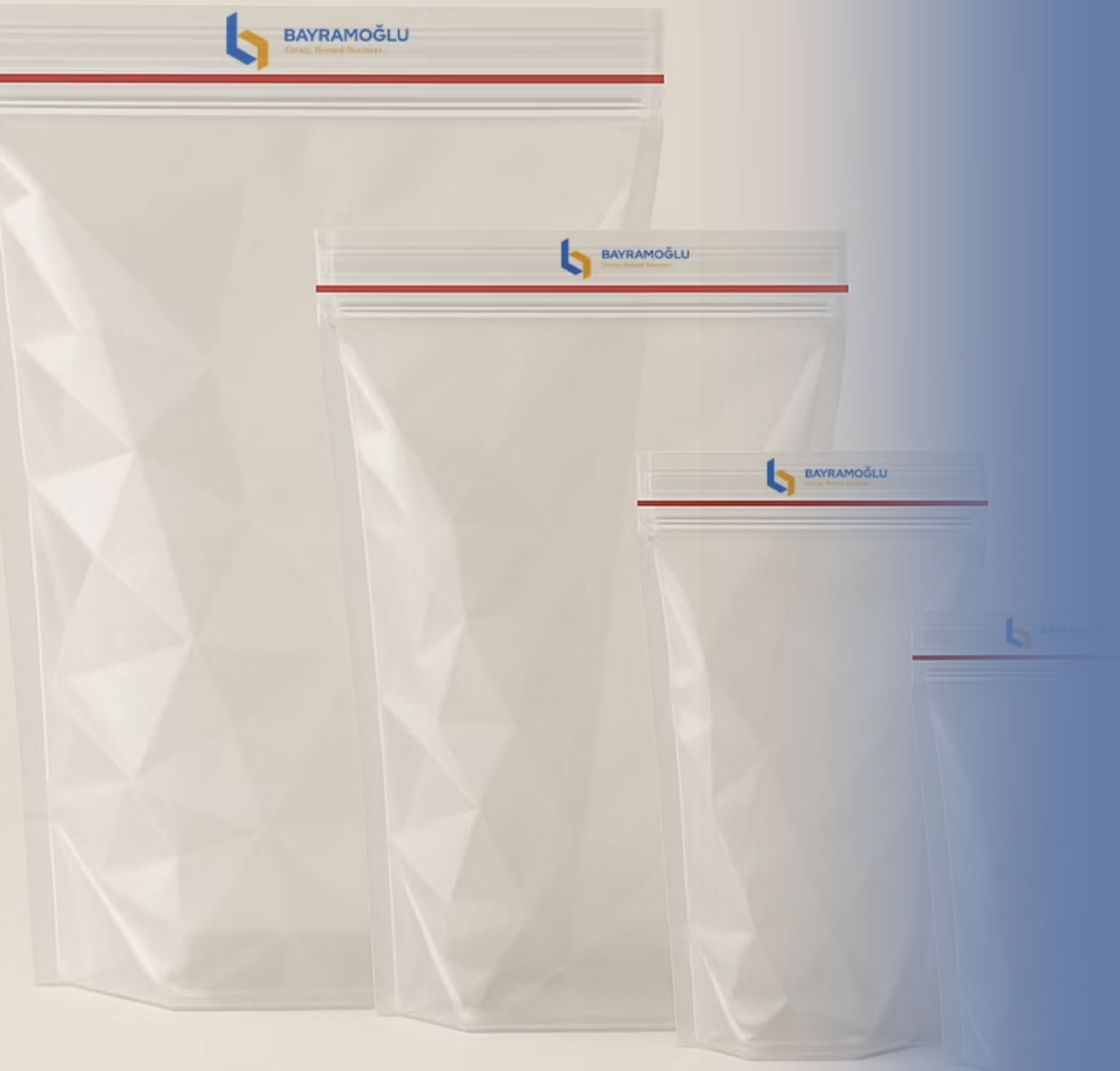
FOOD GRADE

Our food-grade packaging solutions are specifically designed to preserve the freshness, quality, and safety of various food products. Ideal for packaging ready-to-eat meals, semi-prepared foods, dried fruits, legumes, bread, cereals, and more, our food-grade plastics ensure secure and hygienic packaging for your products. Made from high-quality, food-safe materials, our food-grade packaging offers exceptional durability and longevity, protecting food from contamination and spoilage. Importantly, the materials used are free of nanomaterials and comply with the highest food safety standards.

Key Advantages:

- Safe for direct contact with food
- Durable and long-lasting protection
- No harmful nanomaterials used
- High-quality materials meeting food safety standards
- Suitable for a wide range of food products
- Maintains freshness and product quality

With our food-grade packaging, your products will benefit from longer shelf life while maintaining the highest standards of safety and hygiene.



CONTACT US



[bayramoglu_group](#)



[bayramoglu_group](#)



info@bayramoglu-group.com



[BAYRAMOGLU-GROUP](#)



[bayramoglu-group.com](#)



[+98 936 665 2022](#)



[+98 173 255 7260](#)



[BAYRAMOGLU_GROUP](#)

BOARDS



ANNEH MOHAMMAD KARAJA

COMMERCIAL MANAGER

+98936 665 2022



DR. RAHMAN GHARABASH

CHAIRMAN OF BOARD

+98911 171 6191



DAYAN GHARABASH

GENERAL DIRECTOR

+98911 375 1727

